



Pastel Festival Hair Placement

@sammy_scissorhands

PINK FORMULA

Pink: 10g

Neon Pink: 5g

Magenta: 2 drops

Pastel Blue: line

LAVENDER FORMULA

Neon Blue: 10g

Neon Pink: 8g

Grape: 1 drop

PASTEL BLUE FORMULA

Neon Blue: 10g

Blissful Blue: 8g

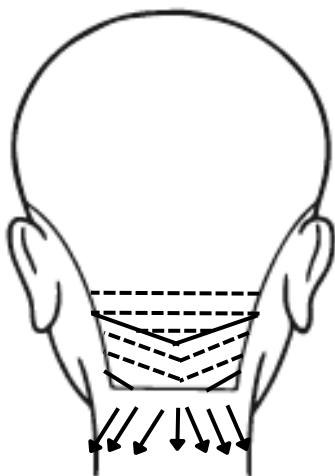
Pink: little line

ALL PRAVANA



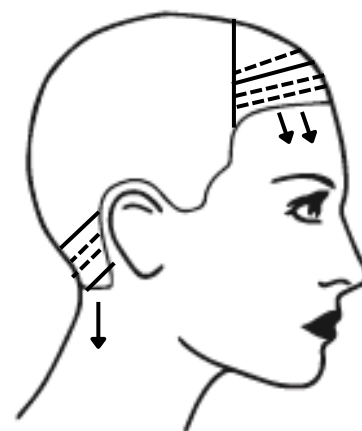
**Diagonal Forward Sections
towards the face**

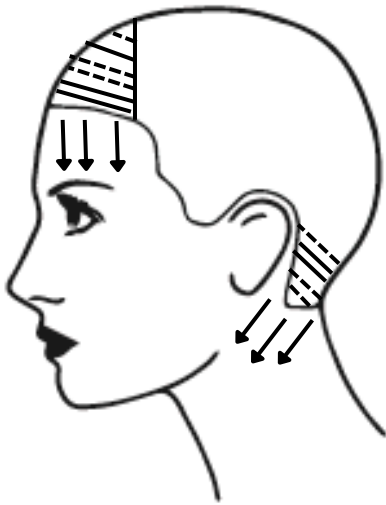
Slices at hairline



Hairline

Weave and slice
diagonally, then pivot as
you come up the head





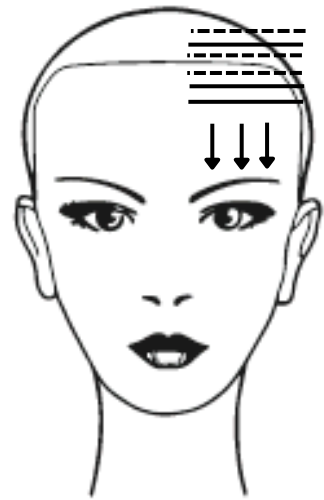
Slicing = Higher impact
Weaving = Blended

Brunette with Red Placement
@sammy_scissorhands

RED FORMULA

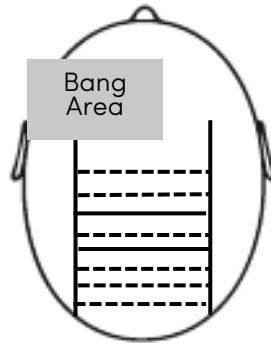
5-88 40g
5-99 12g
_-89 10g

IGORA Royal



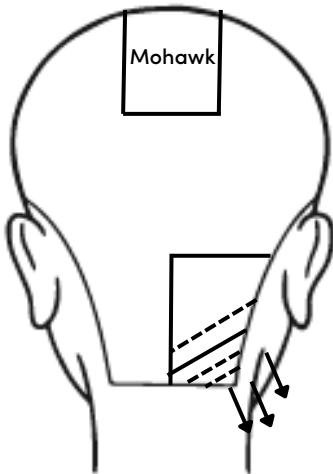
Half Bang / Front

Starting at hairline, 2 slices with little hair in between creates contrast against brunette

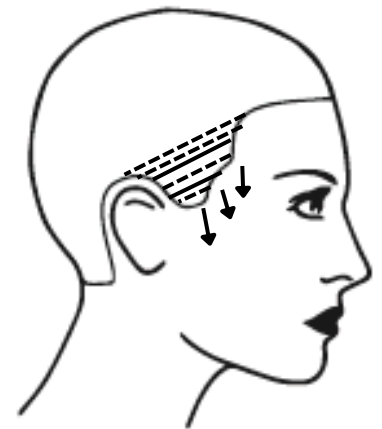


Mohawk Section Top View

Mostly weaves, leave out good chunk of hair in between bang area and mohawk section. As you get further back on head, leave out more space between foils.



Diagonal foils following the hair line weaves and slices



Start at hairline leaving small slice of hair out, then weave first foil. Follow weaves and slices up to temple of head